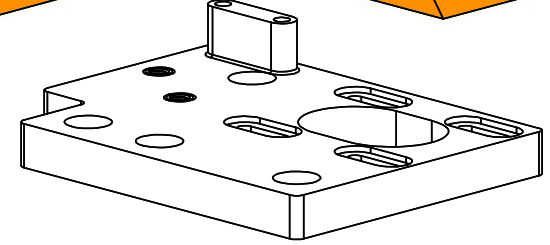
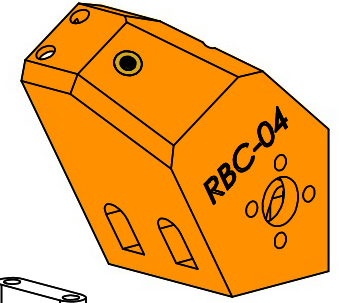
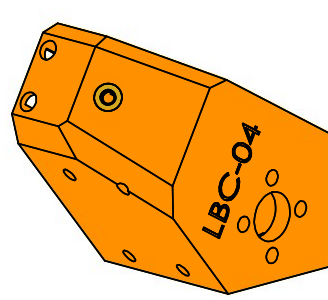
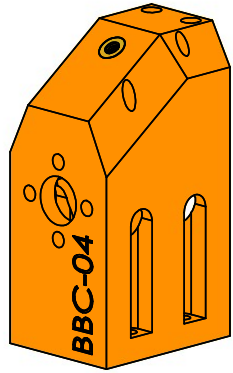
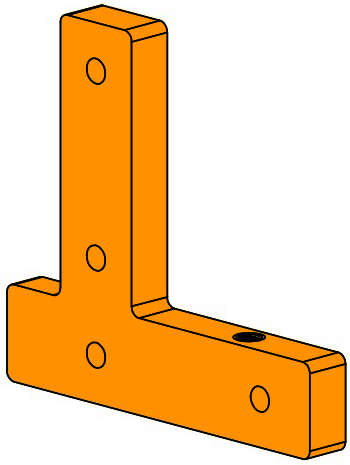


2

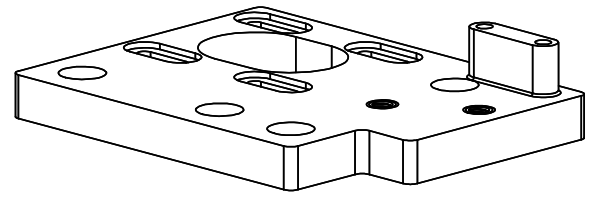
1

B

B



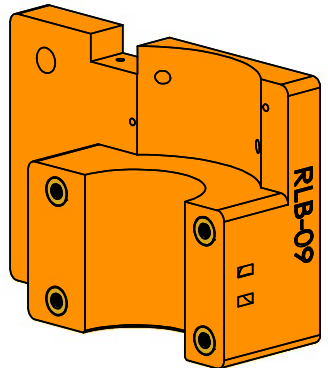
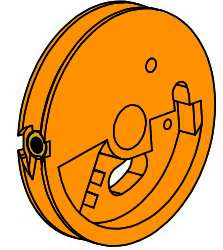
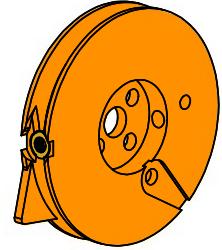
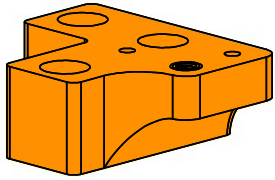
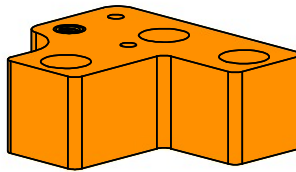
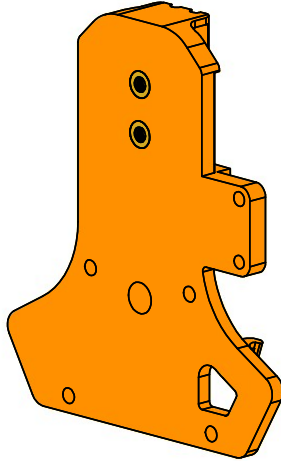
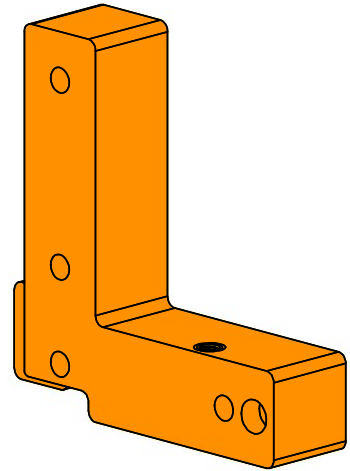
Jubilee 2.0.2 and earlier.



Jubilee 2.0.2 and earlier.

A

A



These parts have Heat-Set Inserts installed in them. This guide will walk you through the *Plate Press Technique* to install them correctly without any expensive tools.

Parts with Heat Set Inserts



Created by:  
Joshua Vasquez

last edited:  
5/27/2020

SCALE: 2:3

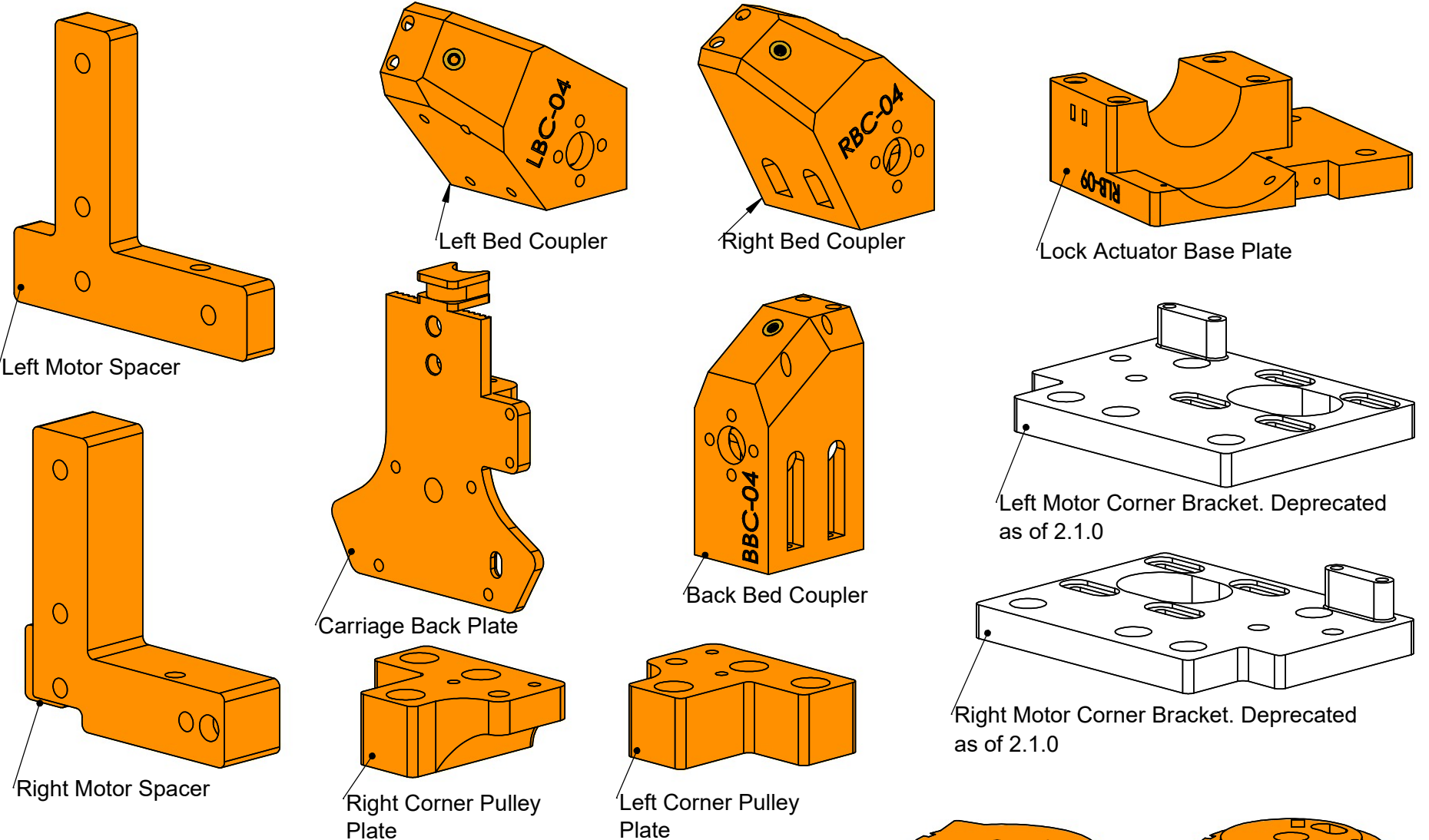
SHEET 1 OF 5

2

1

B

B



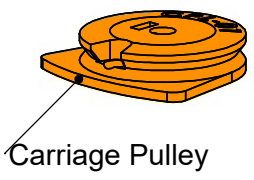
A

A

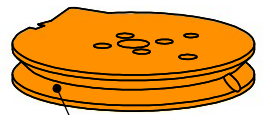
Collect the following parts above. Ensure that each part was printed with 6 perimeter layers; otherwise, inserts will melt through the perimeter walls and fall out!

In addition, you will need:

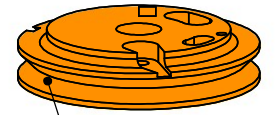
Required Inserts	
M4 Tapered Long Heat Set Insert	4
M3 Tapered Heat Set Insert	22



Carriage Pulley



Fixed Pulley



Floating Pulley

Part Inspection		
	Created by:	last edited:
	Joshua Vasquez	5/27/2020
SCALE: 2:3	SHEET 2 OF 5	

- 1) Heat up the Soldering Iron. (a special tip is recommended, but not required.)
- 2) With the insert pre-placed over the hole, gently touch the iron to the insert. Let the weight of the iron gently push the insert into the hole. This process should take about 10-15 seconds.
- 3) When the insert is about 90% inserted, remove the iron. Quickly either:
  - (a) flip the part upside down onto a heat resistant surface, or
  - (b) push any flat metal surface (such as a razor blade) onto the insert and push it completely down.
 Wait 5 seconds for the insert to cool in this position.
- 4) That's it! Your insert is installed at the proper height and angle.

B

B

A

A

### The Plate Press Technique Overview



Created by:  
Joshua Vasquez

last edited:  
5/27/2020

SCALE: 3:4

SHEET 3 OF 5

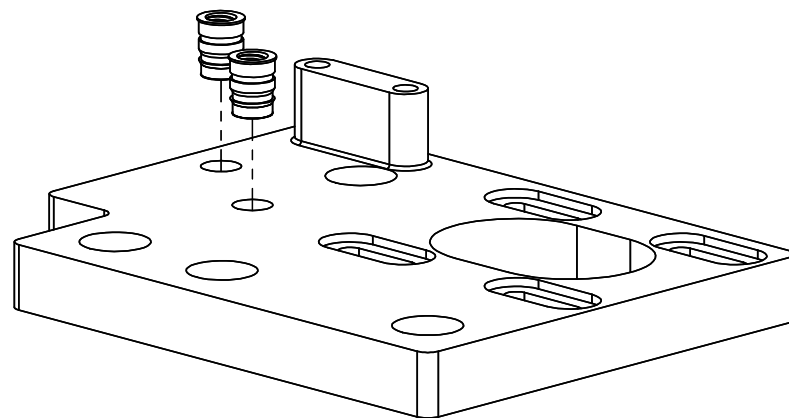
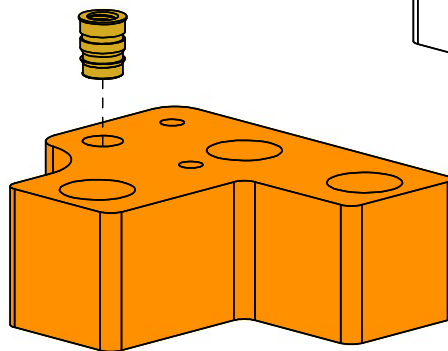
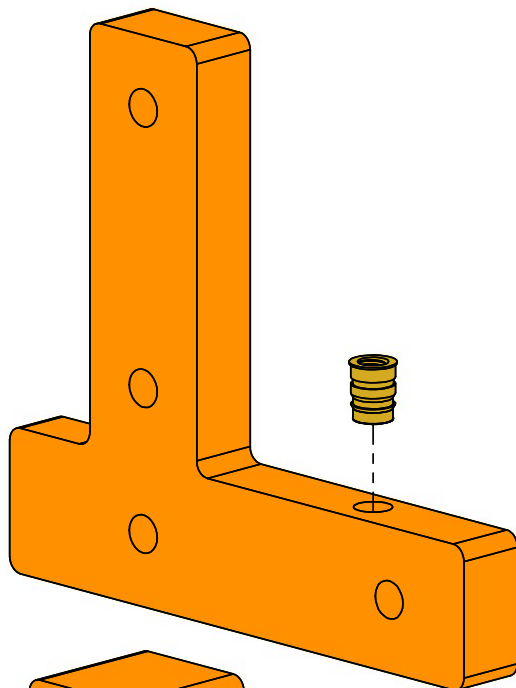
2

1

Install the following Long **M4** Heat Set Inserts from the directions shown such that they are flush with the surface they are installed into.

B

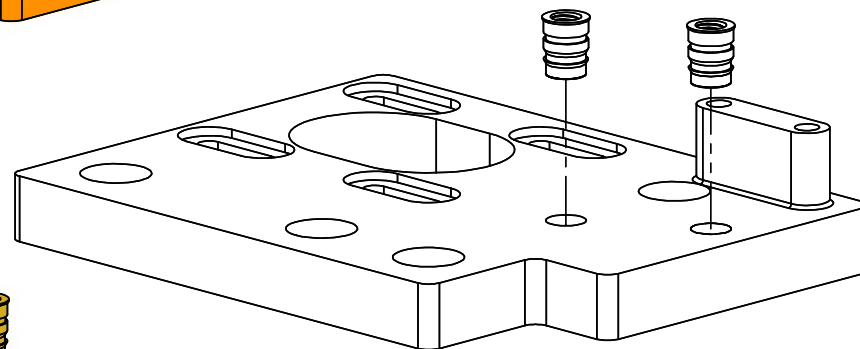
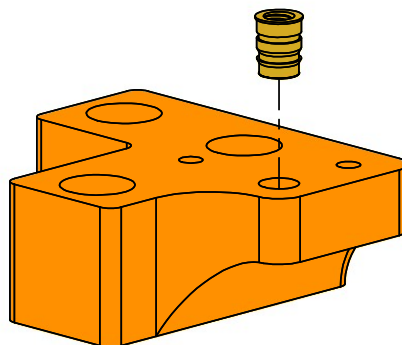
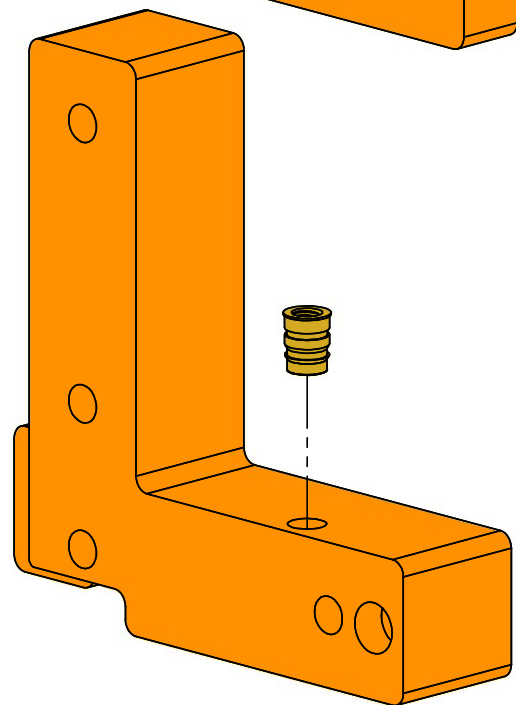
B



Jubilee 2.0.2 and before uses this part.

A

A



Jubilee 2.0.2 and before uses this part.

2

1

### M4 Insert Installations



Created by:  
Joshua Vasquez

last edited:  
5/27/2020

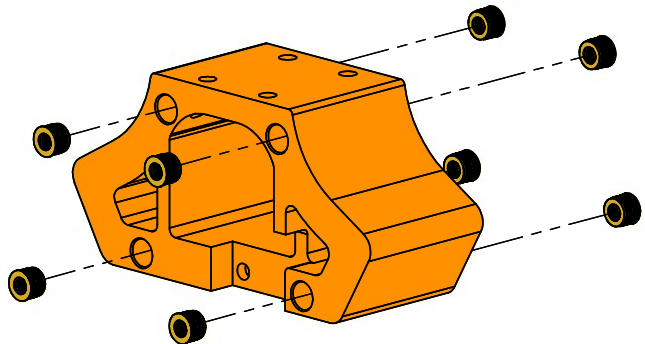
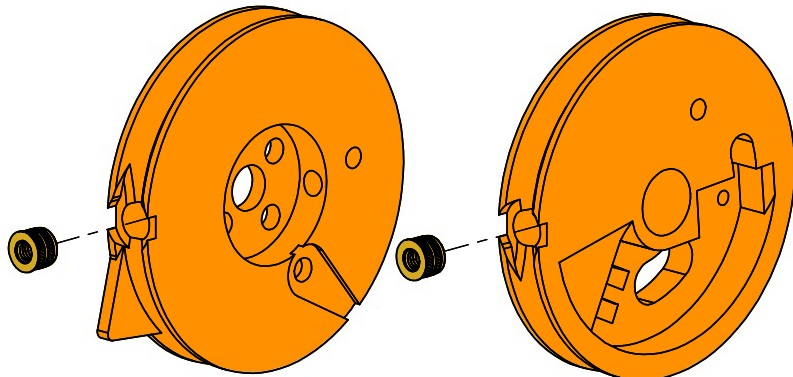
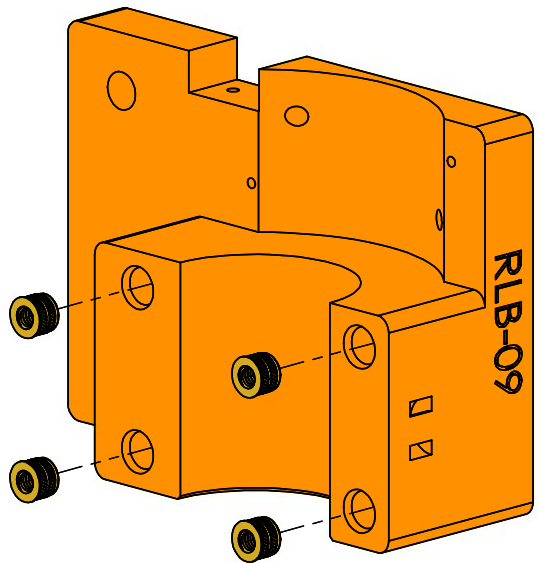
SCALE: 3:4

SHEET 4 OF 5

2

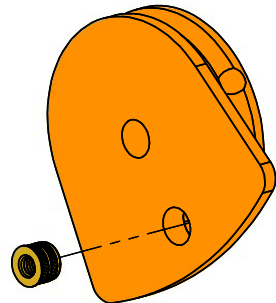
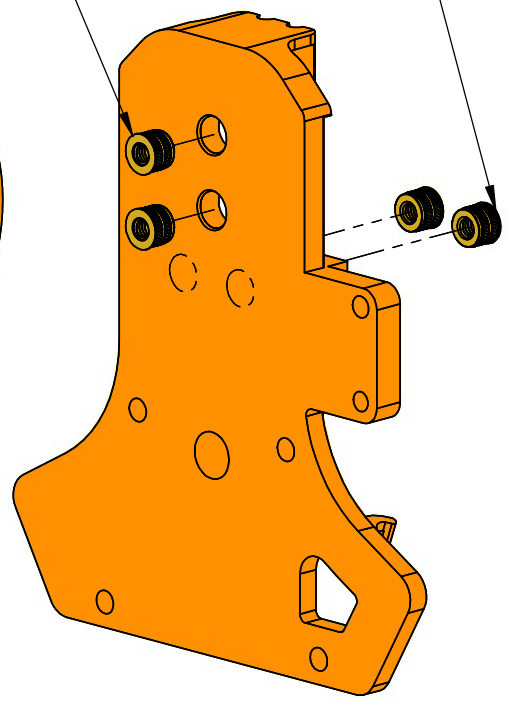
Install the following **M3** Heat Set Inserts from the directions shown below such that they are **flush** with the surface they are installed into.

B

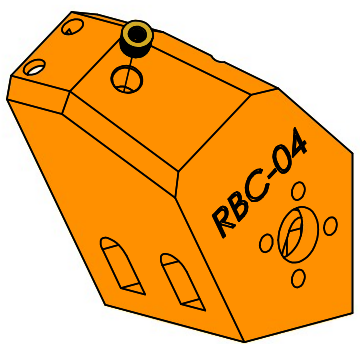
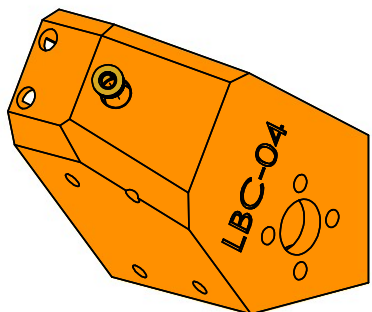
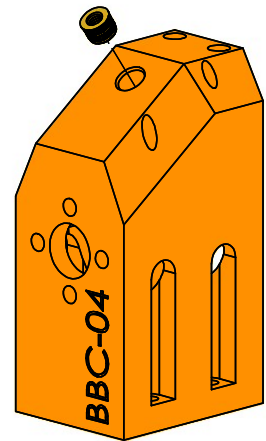


1

These go in from the front!  
These go in from the back!



A



B

A

That's it! Set all these parts aside for use in later instructions.

### M3 Insert Installations



Created by:  
Joshua Vasquez

last edited:  
5/27/2020

SCALE: 3:4

SHEET 5 OF 5

2

1